

KA-110u

CODE	項目	Unit	KA-110u
X, Y, Z-axis travel range	行程範圍(X/Y/Z)	mm	1100 / 1100 / 800
X, Y, Z-axis rapid traverse rate	快移速度(X/Y/Z)	m/min	40 / 40 / 40
Table size	工作台尺寸	mm	ø1000
Max. table load	工作台最大負荷	kg	2000
Distance from spindle nose to table	主軸鼻端到工作台距離	mm	10~810
T-slot size	T型槽尺寸	mm	18
Spindle taper	主軸刀把型式		HSK-A63
Max. spindle speed	主軸轉速	rpm	18000
Spindle motor power output (Rated)	主軸馬達額定輸出功率	KW	15
Spindle motor power output (Max.)	主軸馬達最大輸出功率	KW	19.4
Spindle motor torque output (Rated)	主軸馬達額定輸出扭力	Nm	71.6
Spindle motor torque output (Max.)	主軸馬達最大輸出扭力	Nm	92.6
B-axis swiveling range	B軸旋轉角		-30° / +120°
B-axis speed	B軸轉速	rpm	30
C-axis rotating angle	C軸旋轉角		360°
C-axis speed	C軸轉速	rpm	30
B, C-axis indexing resolution	B、C軸最小進給單位		0.001°
Magazine type	刀庫型式		鏈式/刀臂式換刀 Chain / Arm
Magazine pocket number	刀具數量	pcs	40
Max. tool diameter (adj. tool)	最大刀具直徑(相鄰刀)	mm	75
Max. tool length (from spindle nose)	最大刀具長度	mm	300
Max. tool weight	最大刀具重量	kg	8
Air pressure required	空壓需求	kg/cm ²	6
Machine weight	機械重量	kg	18000
Machine dimensions (LxWxH)	機械外觀尺寸(長x寬x高)	mm	4350 x 3550 x 4100

- The data shown in parenthesis are optional.
- AS the manufacturer constantly improves the machine specifications and design characteristics, above specifications are subject to change without notice.
- 規格表內括弧內容為選購附件。
- 本公司對產品規格、設計特性均不斷研究改進，上述規格若有變更，恕不另行通知。

KOVA 協銳精密工業股份有限公司
KOVA PRECISION INDUSTRIAL CO., LTD.

台灣 41278 台中市大里區仁化工十二路 27 號
 No.27, Renhuagong 12th Rd, Dali Dist., Taichung City 41278, Taiwan.
 TEL: 886-4-2496 6000 FAX: 886-4-2496 8000
 E-mail: info@kova.com.tw

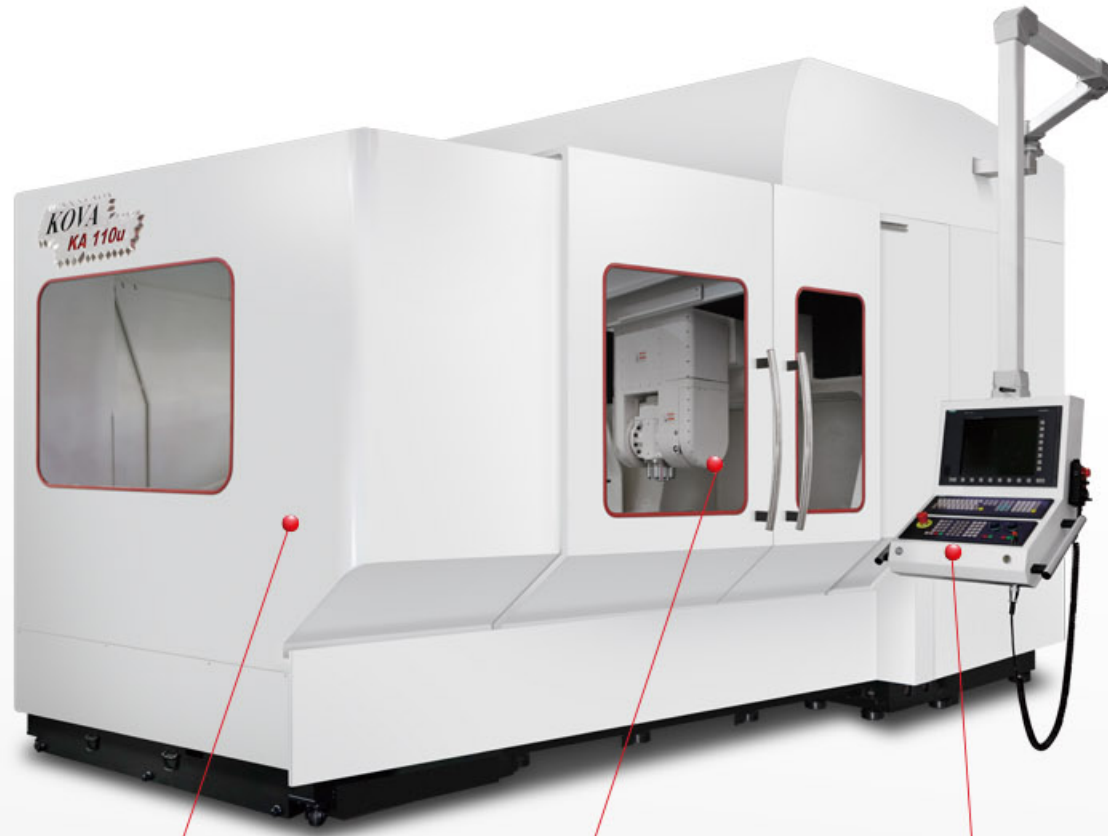


Gantry Type 5-axis Machining Center
 門型五軸加工中心機

KA-110u Gantry Type 5-axis Machining Center

門型五軸加工中心機

**High Precision..
High Efficiency...**



Full enclosed splash guard.
全罩式外罩钣金。

Wide Door Opening
Wide door opening, easy access for workpiece load/unload.
寬廣門開寬度，方便工件上下。

Siemens 840D Control
Siemens 840D sl control, 5 axes simultaneously milling.
西門子840D sl控制器，五軸同時銑削。



- Roller Linear Slides**
Roller linear guide for all linear axes ensure fast speed and high cutting rigidity.
所有線性軸採用滾柱線性滑軌，確保快速位移速度及高切削剛性。
- Rigid Construction**
Rigid machine construction, all major structure parts are made from cast iron.
堅固的機器結構，所有主要零件均由米漢納鑄鐵組成。
- Rotary Table & Swivel Head**
Optimal 5 axes configuration with Rotary table and Swivel head.
最佳五軸架構，旋轉工作台及搖擺頭。
- Optical Scale**
High resolution absolute direct measuring system as standard.
所有軸配備高解析度絕對式光學尺。

TYPICAL MACHINING APPLICATIONS 加工產品應用例

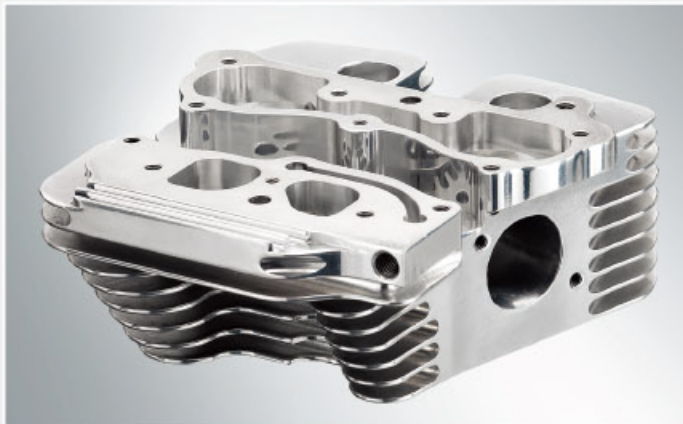
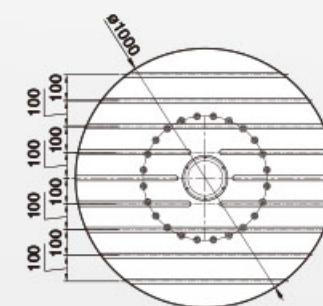
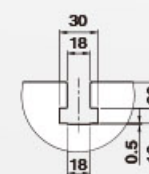


TABLE 工作台

Unit: mm



T-slot T型槽



HSK-A63

Unit: mm

